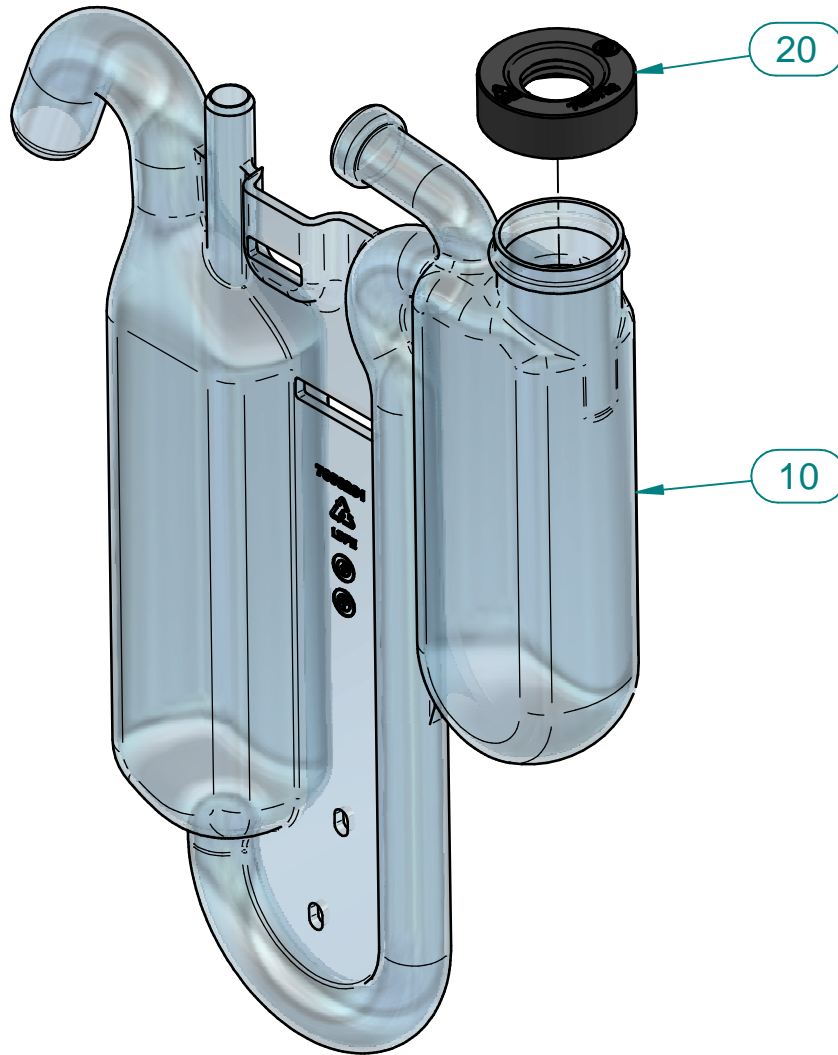


1 2 3 4

ALL COMPONENTS MUST COMPLY WITH THE EUROPEAN DIRECTIVE ON THE RESTRICTION OF THE USE OF CERTAIN HAZARDOUS SUBSTANCES (RoHS). CHECK REVISION AND STATUS BEFORE USE.



10	1	7606201	04	SIPHON H.250
20	1	7605733	01	SEAL SIPHON LUNA FSB
Pos	Qty	Item	Rev	Description

-		-	
Change Description			Refers To

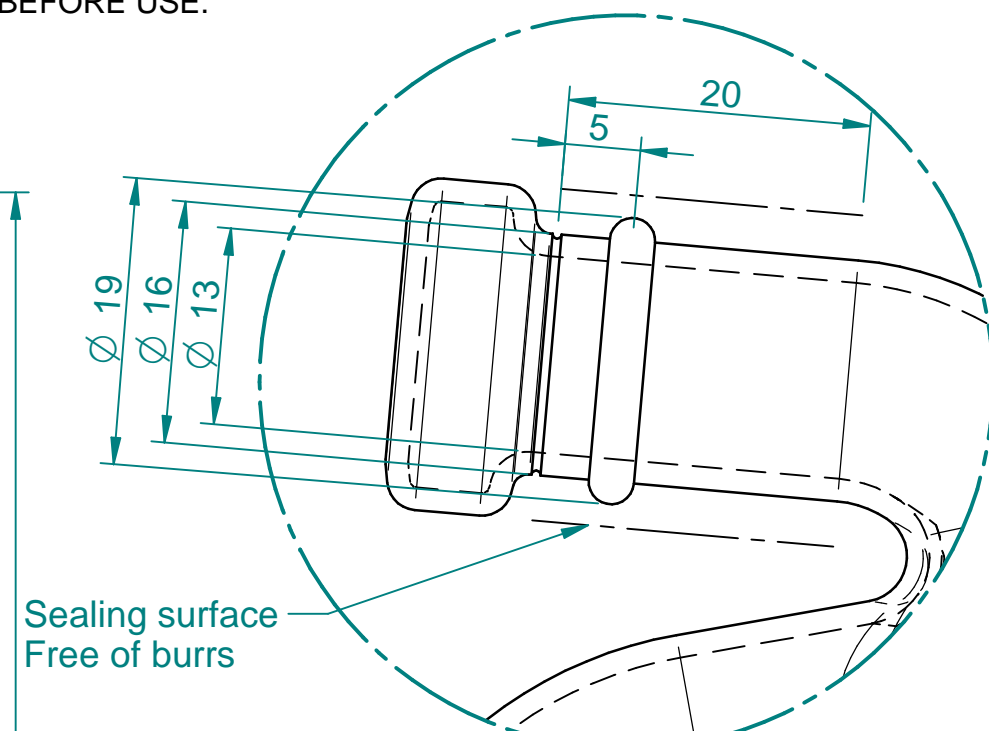
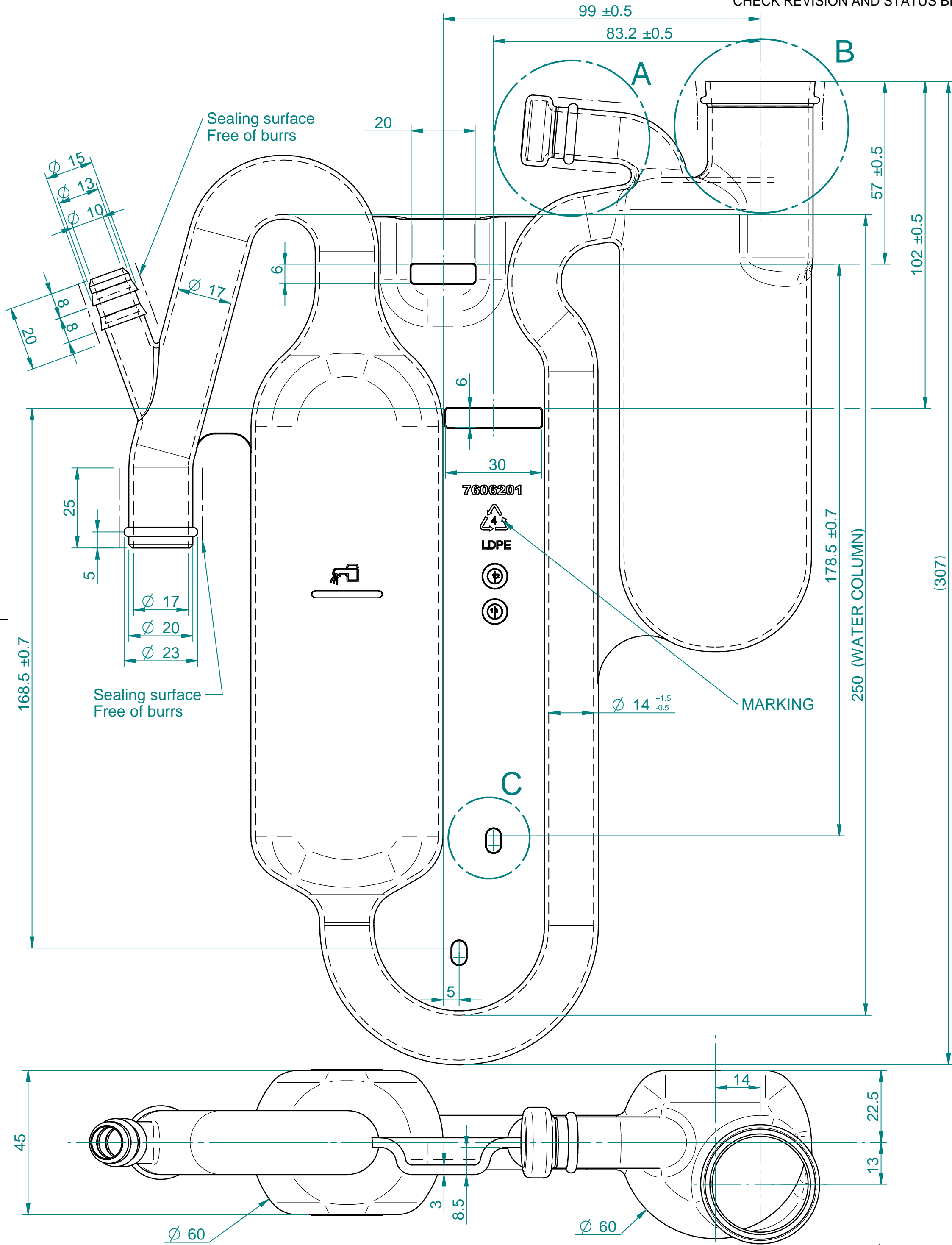
DIMENSION TOLERANCE TO ISO 14405 (E) All Dimensions Must Meet Envelope Requirements. Tolerance: -

A4	Sheet No.: 1 of 1	First Angle Projection	Material specification: -
Units : mm	Scale : 1:2		Creator: Bloss, Michael
			Date of Issue: 09-Oct-2013

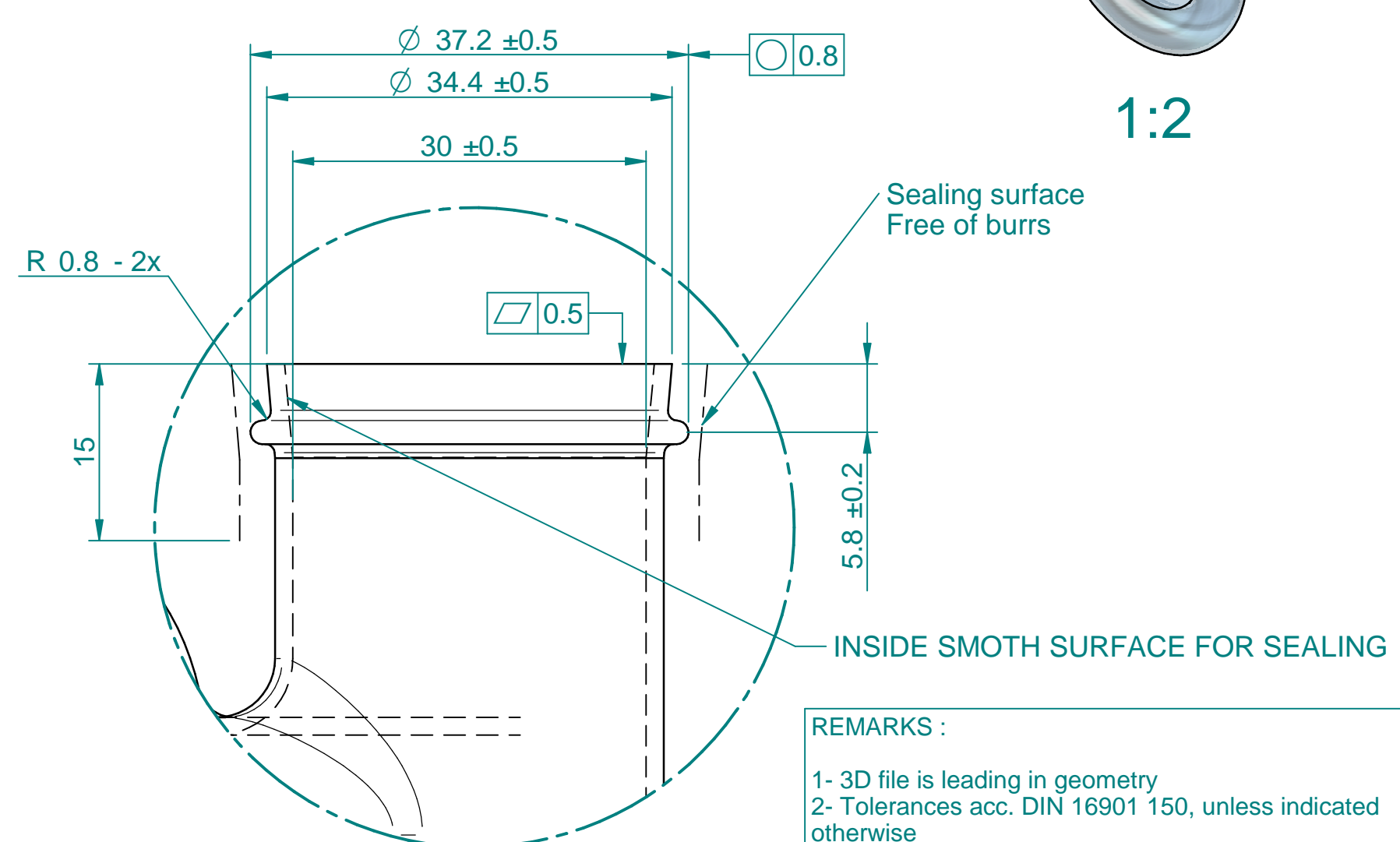
		Title: SYPHON + GASKET ASSY	
Release Status: Released	Work In Progress When Blank	Item Number : 7608690	Revision : 01

THE REPRODUCTION, DISTRIBUTION AND UTILIZATION OF THIS DOCUMENT AS WELL AS THE COMMUNICATION OF ITS CONTENTS TO OTHERS WITHOUT EXPRESS AUTHORIZATION IS PROHIBITED. OFFENDERS WILL BE HELD LIABLE FOR THE PAYMENT OF DAMAGE. ALL RIGHTS RESERVED IN THE EVENT OF THE GRANT OF A PATENT, UTILITY MODEL OR DESIGN.

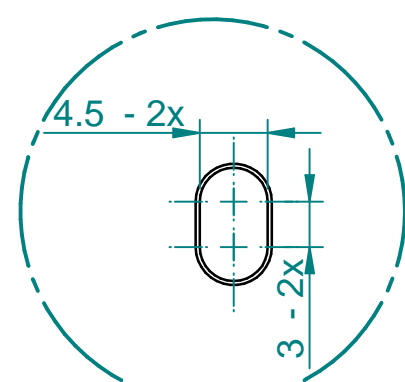
ALL COMPONENTS MUST COMPLY WITH THE EUROPEAN DIRECTIVE ON THE RESTRICTION OF THE USE OF CERTAIN HAZARDOUS SUBSTANCES (RoHS).
CHECK REVISION AND STATUS BEFORE USE.



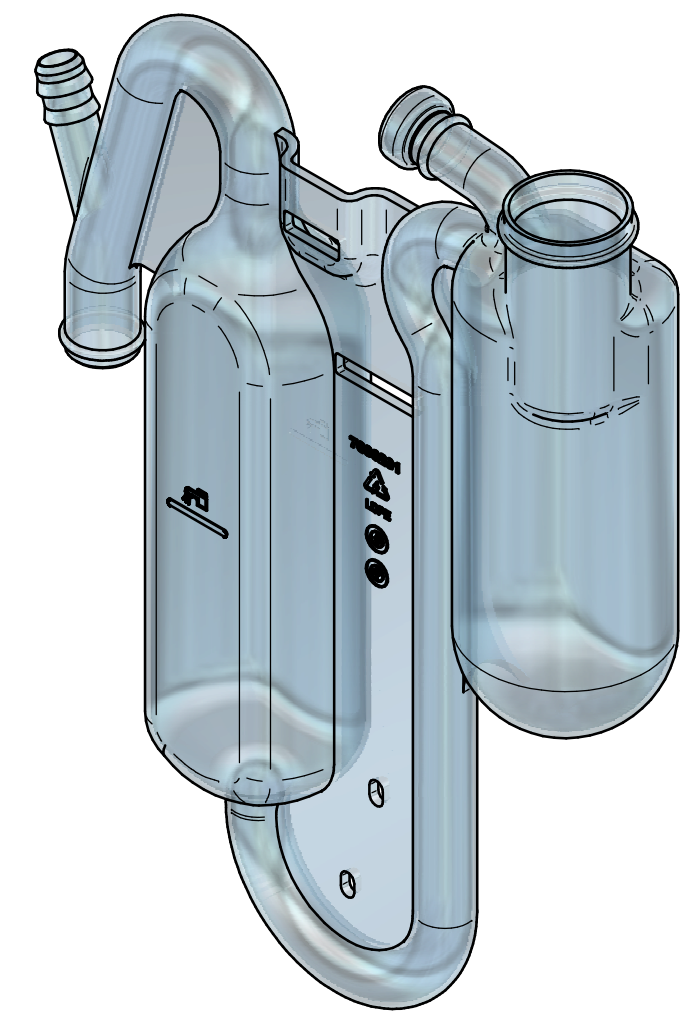
DETAIL A
2:1



DETAIL B
2:1



DETAIL C
2:1



1:2

- REMARKS :
- 1- 3D file is leading in geometry
 - 2- Tolerances acc. DIN 16901 150, unless indicated otherwise
 - 3- Wall thickness 1.5 mm (typical) / min. 0.8 / max. 3 mm
 - 4- Texture : technical polished
 - 5- Radius R 0.5 - R 1 mm
 - 6- Part has to be identified with : Art. number, date clocks, recycling symbol, at indicated positions
 - 7- Water filling level, indicated by tap symbol on both sides
 - 8- Text height min. 3 mm embossed 0.3 mm above surface
 - 9- Part has to comply with PSP 100146
 - 10- All the continuous cavities need to have an internal diameter of minimum 13 mm.
 - 11 - Volume: 175 cm³
 - 12 - Mass: 162 g

Change Description		Refers To	
DIMENSION TOLERANCE TO ISO 14405 (E) All Dimensions Must Meet Tolerance: DIN 16901 - 150			
A2	Sheet No.: 1 of 1	First Angle Projection	Material specification: LDPE
Units: mm	Scale: 1:1	Creator: Lausecker, Christophe	Date of Issue: 11-Apr-2013
BDR THERMEA		Title: SIPHON LUNA	Release Status: Released
Work In Progress When Blank	Item Number: 7606201	Revision: 01	

THE REPRODUCTION, DISTRIBUTION AND UTILIZATION OF THIS DOCUMENT AS WELL AS THE COMMUNICATION OF ITS CONTENTS TO OTHERS WITHOUT EXPRESS AUTHORIZATION IS PROHIBITED. OFFENDERS WILL BE HELD LIABLE FOR THE PAYMENT OF DAMAGE. ALL RIGHTS RESERVED IN THE EVENT OF THE GRANT OF A PATENT, UTILITY MODEL OR DESIGN.