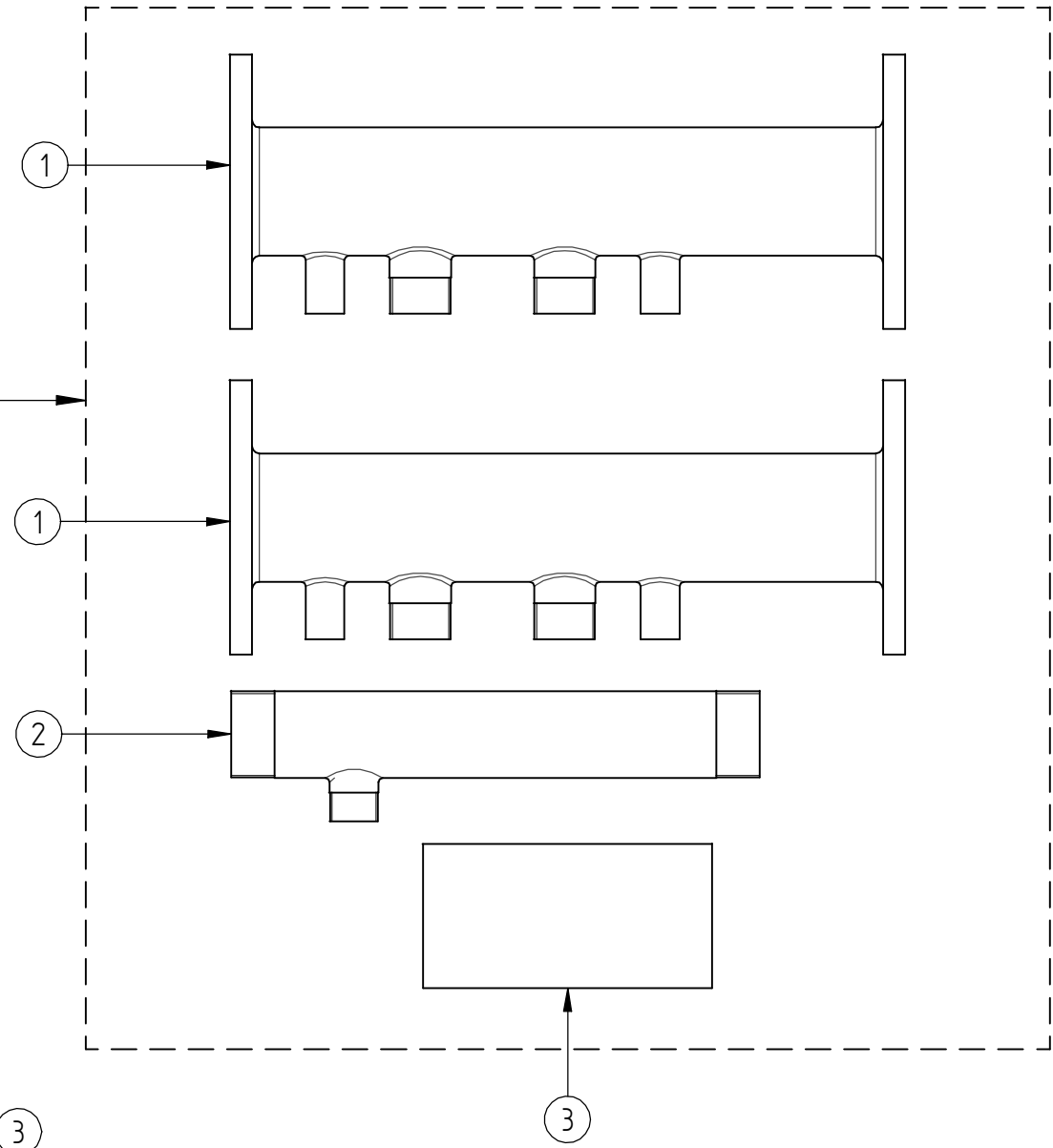


I tre collettori devono essere avvolti singolarmente e poi tenuti assieme tramite una pellicola di nylon in modo da essere protetti nella movimentazione.

- Formato etichetta a discrezione del Fornitore.
- Caratteri ed impostazione grafica, indicativi.
- Grafica in colore NERO.



**ETICHETTA DA APPLICARE SULLA PELLICOLA DI NYLON PROTETTIVA**

**710577501**

**CODICE A BARRE  
TIPO C39  
VEDI 71057.....**

**\*710577501\***

(IT) Kit collettori per caldaia singola da 50/60/70  
 (GB) Manifolds kit for single boiler 50/60/70  
 (FR) Kit collecteurs pour chaudière unique de 50/60/70  
 (ES) Kit colector para una única caldera de 50/60/70  
 (PT) Kit colector para una caldeira 50/60/70

3	Etichetta imballo kit	1				//
2	Collettore gas una caldaia 50-60-70	1				7104992
1	Collettore una caldaia 50-60-70	2				7104681
Pos.	DENOMINAZIONE					Codice

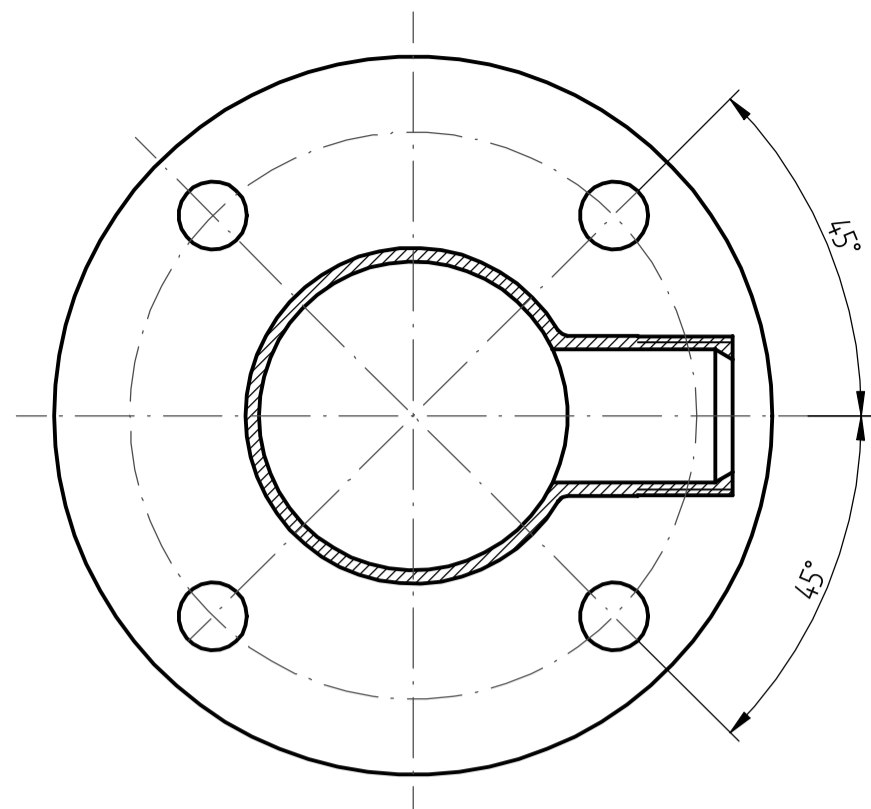
REVISION	MODIFICATION	ENGINEER	REFERS TO	DATE

<b>BAXI S.p.A.</b> A MEMBER OF BAXI GROUP	RELEASE STATUS. <b>Production</b>	ITEM NUMBER. <b>7105775,01</b>	REVISION.
	ENGINEER. Ceccato	DATE. 02-Dec-10	SHEET No. 1 of 1

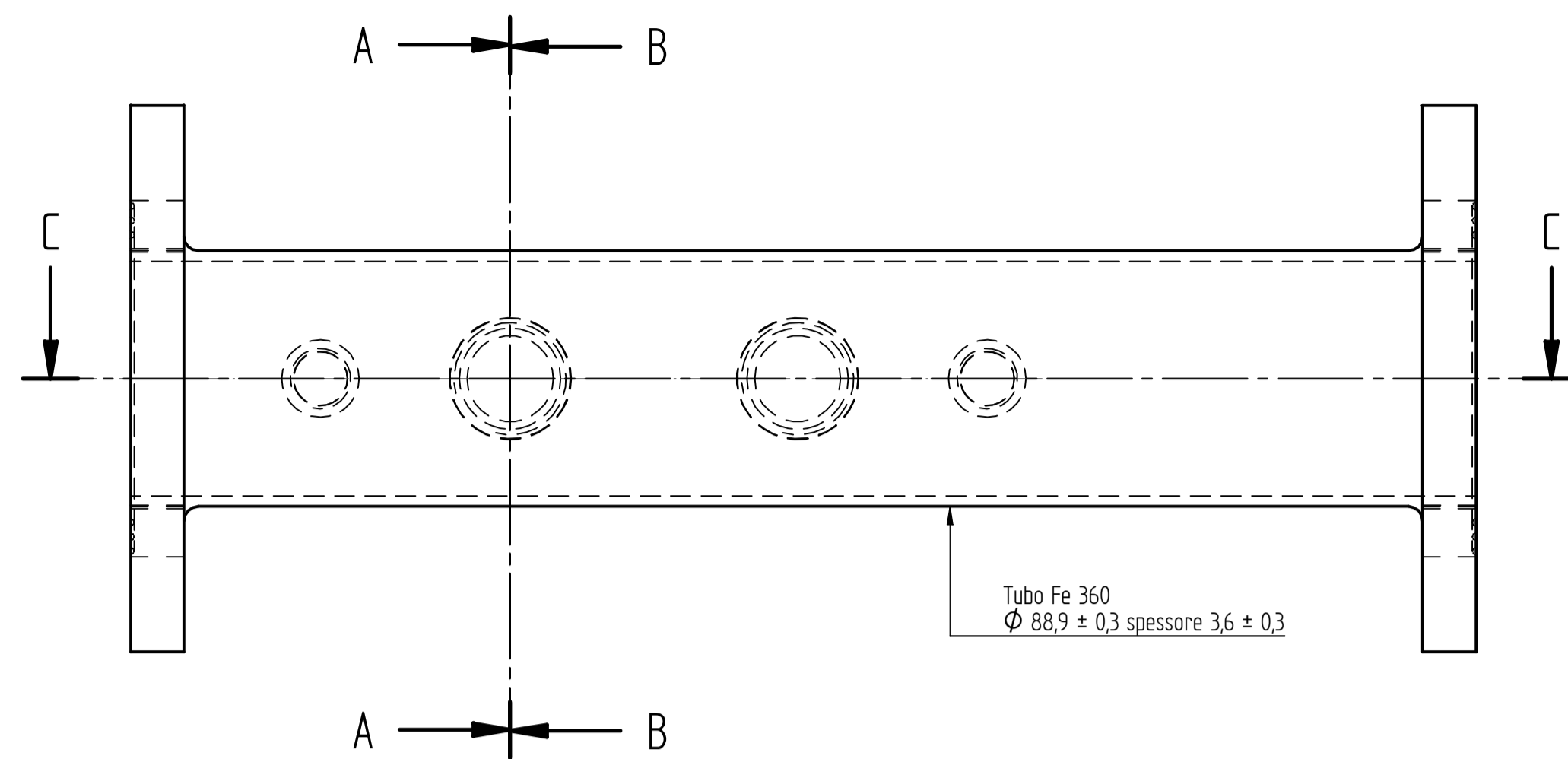
© 2009 TITLE: **KIT COLLET. 1 CALDAIA 50-60-70**

UNITS: mm SCALE: // MATERIAL SPECIFICATION.

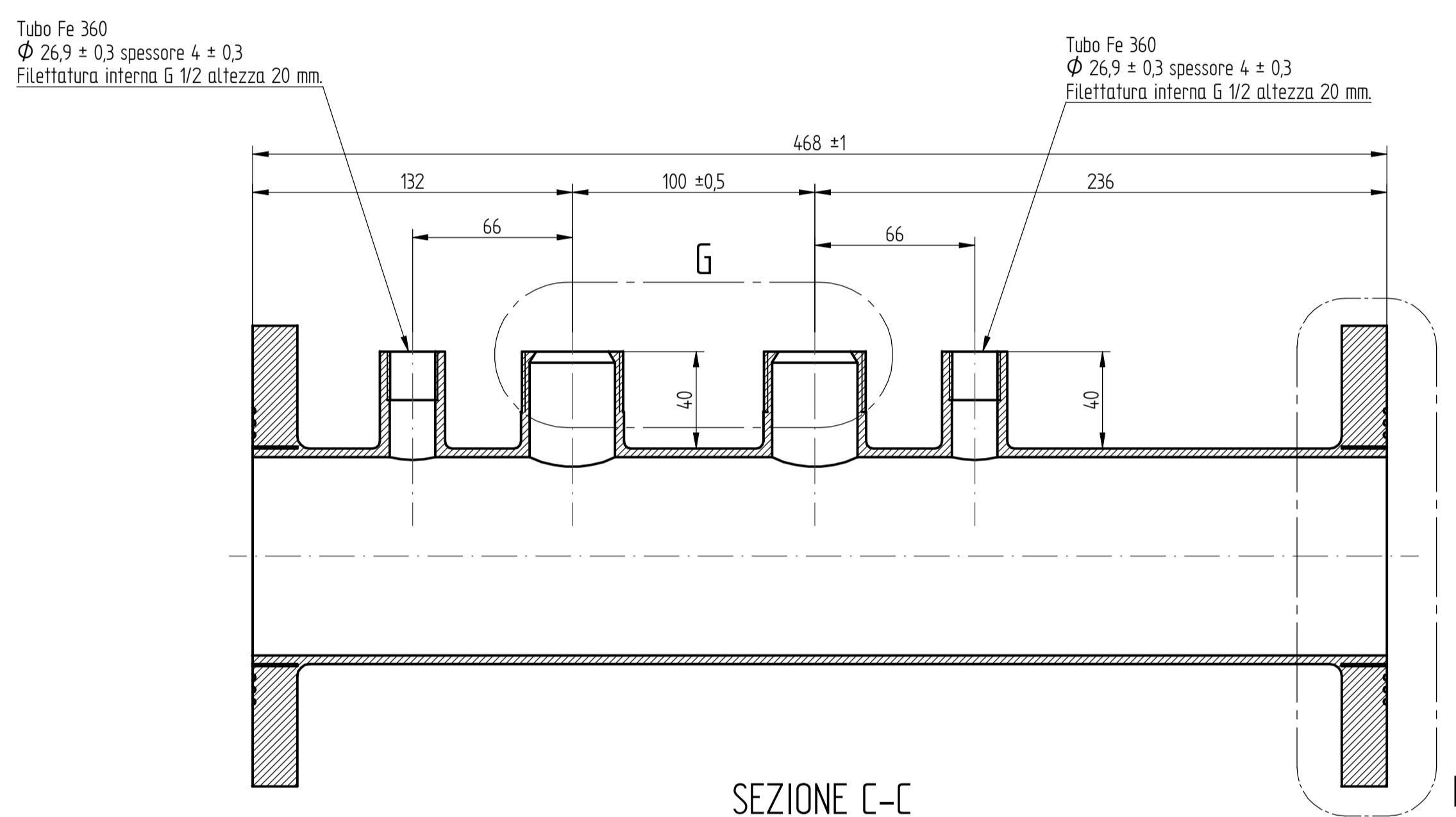
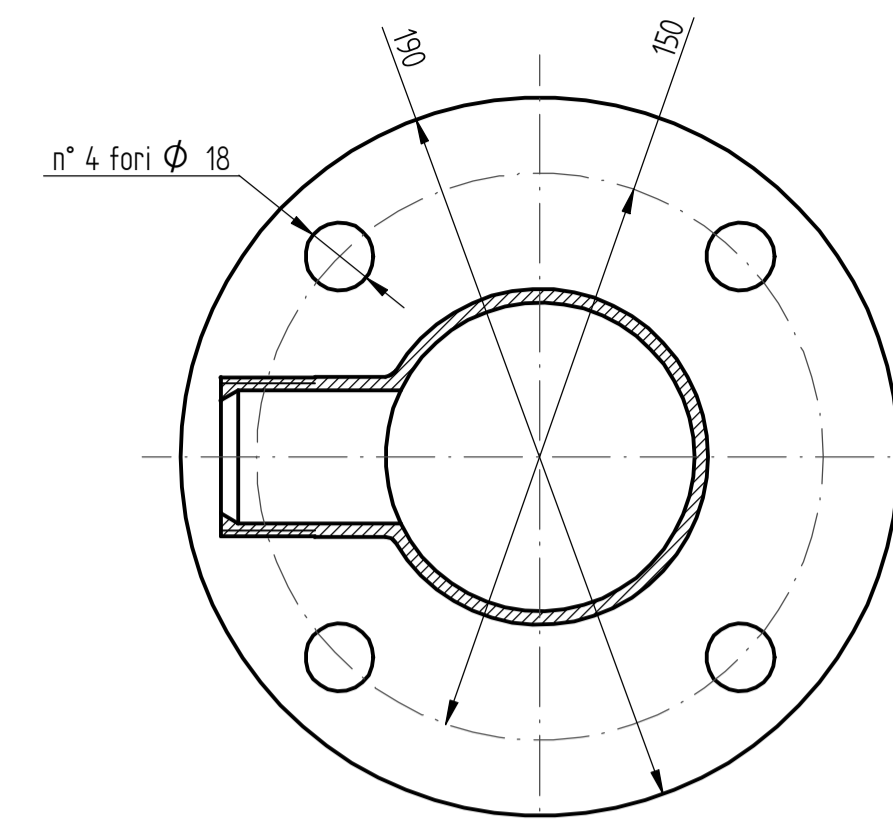
FIRST ANGLE PROJECTION.	TOLERANCE TO EN 22768 - mK UNLESS OTHERWISE SPECIFIED	<table border="1"> <tr> <th>CLASS m</th> <th>0.5-3</th> <th>3-6</th> <th>6-30</th> <th>30-120</th> <th>120-400</th> <th>400-1m</th> </tr> <tr> <td>LINEAR</td> <td>±0.1</td> <td>±0.1</td> <td>±0.2</td> <td>±0.3</td> <td>±0.5</td> <td>±0.8</td> </tr> <tr> <td>RADI &amp; CHAMFERS</td> <td>±0.4</td> <td>±1</td> <td>±2</td> <td>±3</td> <td>±5</td> <td>±8</td> </tr> </table>	CLASS m	0.5-3	3-6	6-30	30-120	120-400	400-1m	LINEAR	±0.1	±0.1	±0.2	±0.3	±0.5	±0.8	RADI & CHAMFERS	±0.4	±1	±2	±3	±5	±8	QUALITY SIGNIFICANCE. [C]=CRITICAL [I]=IMPORTANT
CLASS m	0.5-3	3-6	6-30	30-120	120-400	400-1m																		
LINEAR	±0.1	±0.1	±0.2	±0.3	±0.5	±0.8																		
RADI & CHAMFERS	±0.4	±1	±2	±3	±5	±8																		
		<table border="1"> <tr> <th>CLASS m</th> <th>upto 10</th> <th>10-50</th> <th>50-120</th> <th>120-400</th> <th>400+</th> </tr> <tr> <td>ANGULAR</td> <td>±1°</td> <td>±1°30'</td> <td>±1°20'</td> <td>±1°10'</td> <td>±1°5'</td> </tr> </table>	CLASS m	upto 10	10-50	50-120	120-400	400+	ANGULAR	±1°	±1°30'	±1°20'	±1°10'	±1°5'	ITEM CATEGORY (1, 2 OR 3) <b>3</b> <b>A3</b>									
CLASS m	upto 10	10-50	50-120	120-400	400+																			
ANGULAR	±1°	±1°30'	±1°20'	±1°10'	±1°5'																			



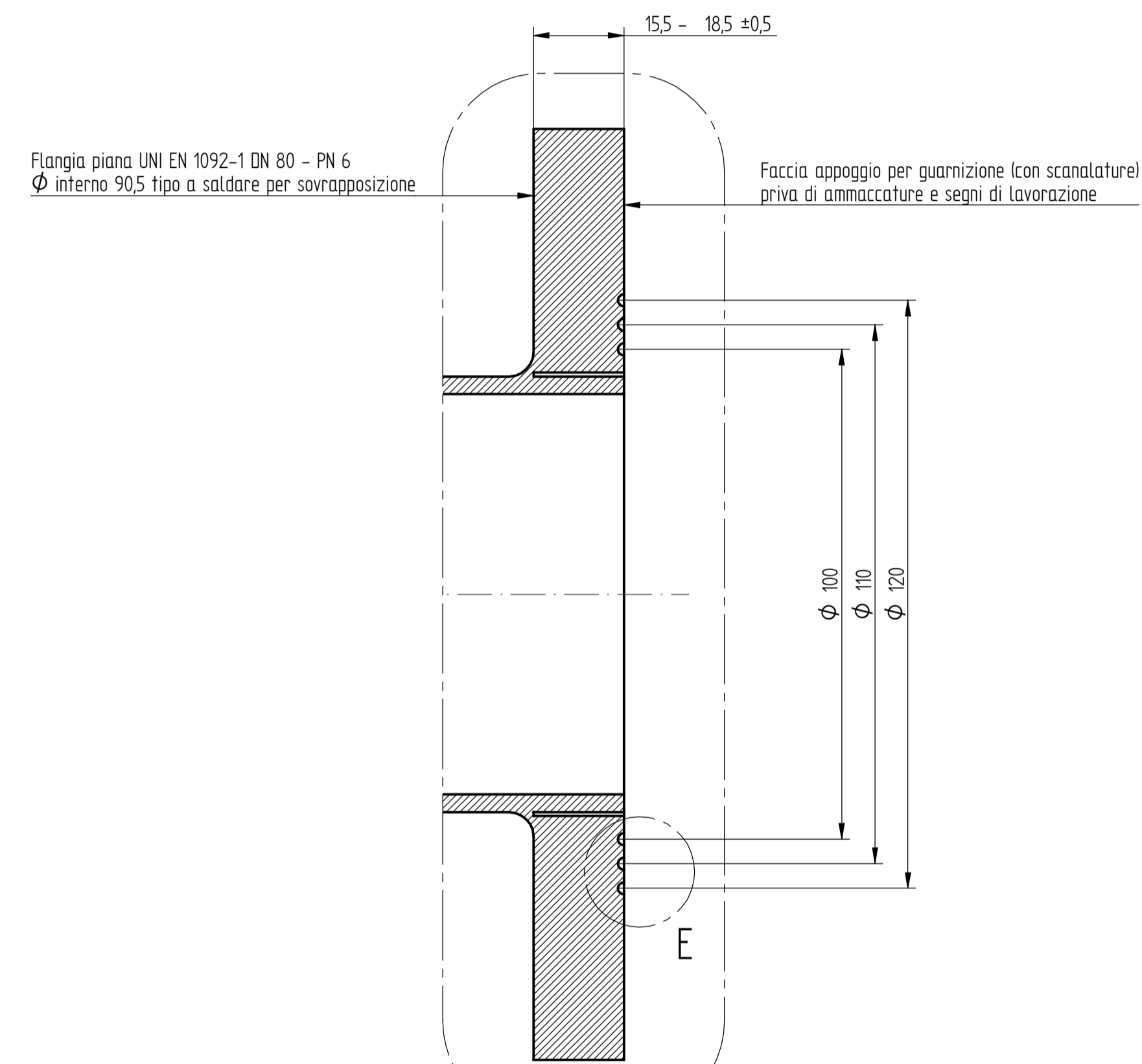
SEZIONE B-B



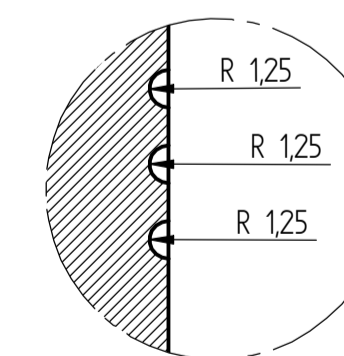
SEZIONE A-A



SEZIONE C-C

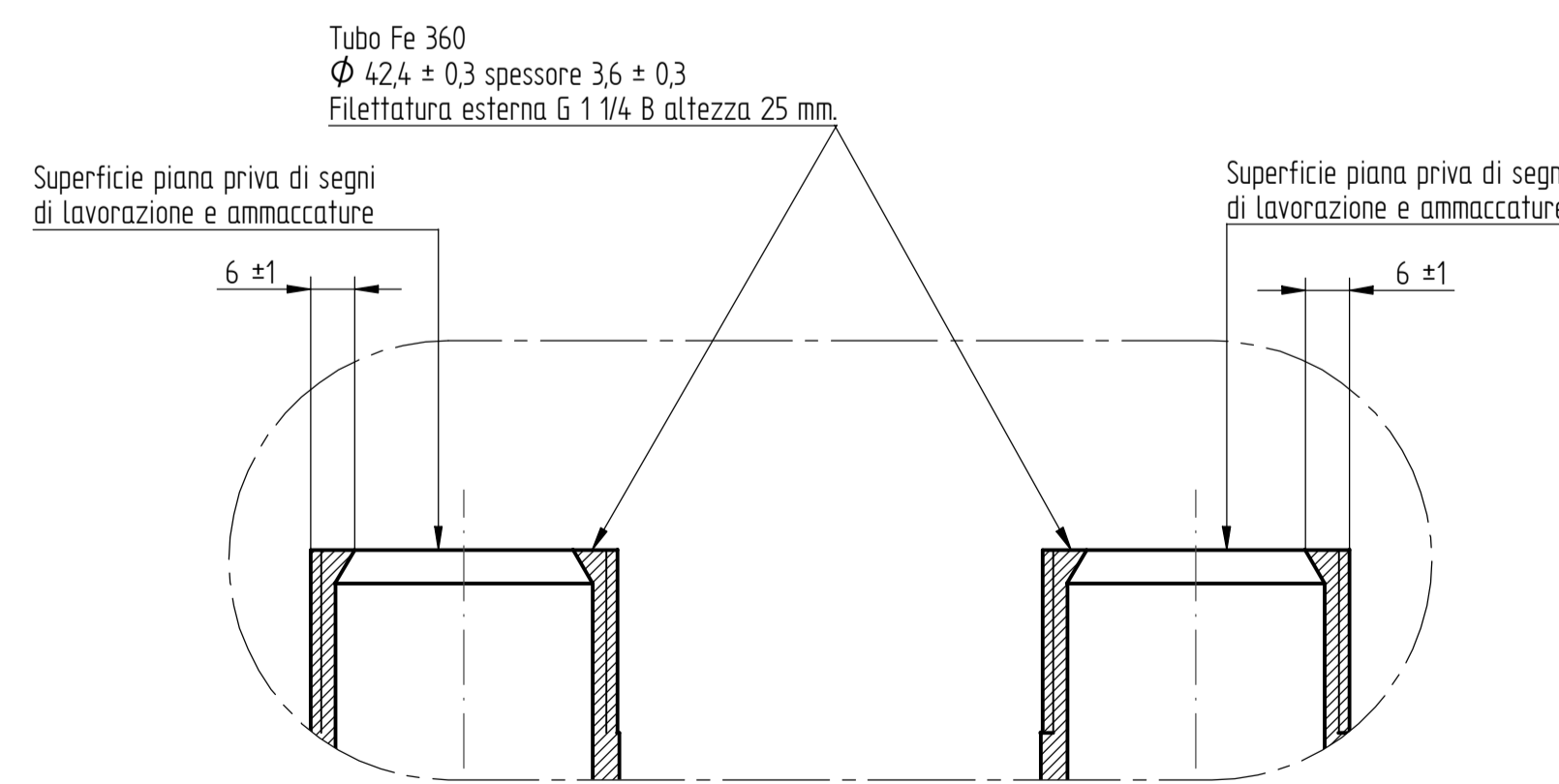
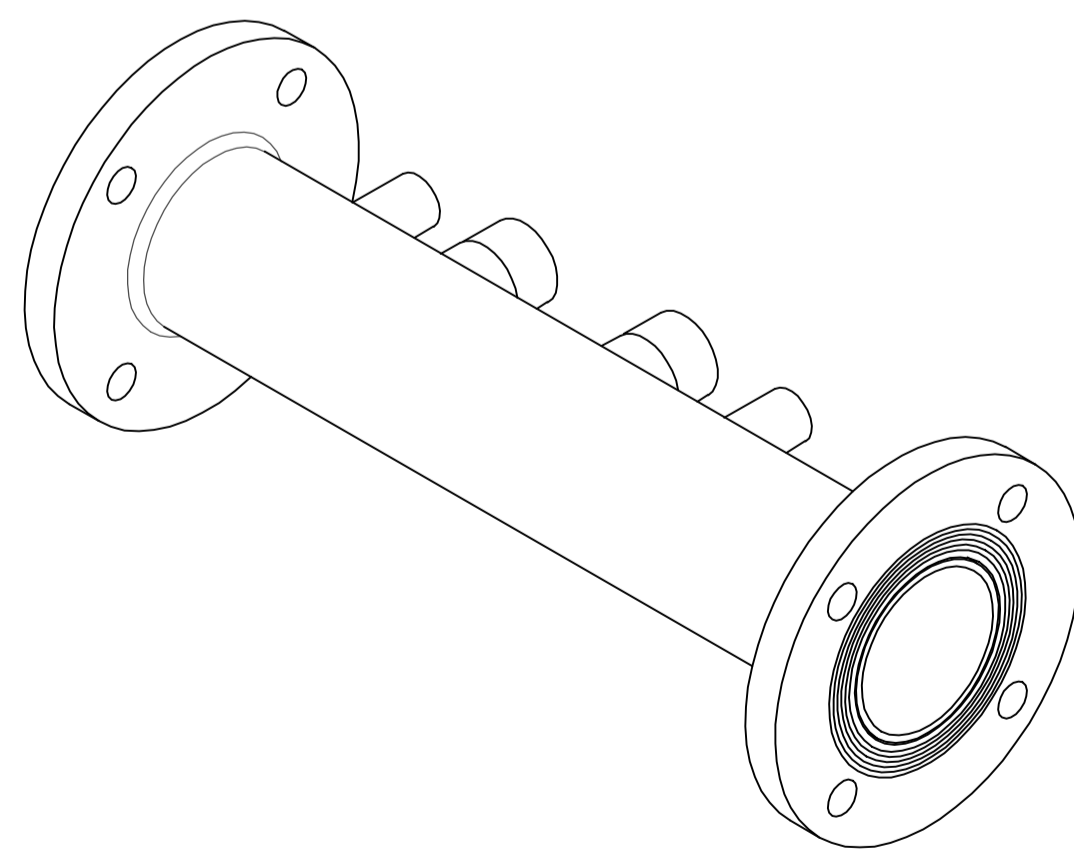


DETTAGLIO D  
1:1



DETTAGLIO E  
2:1

**NOTE**  
 - L'interno del tubo deve essere privo di sporco, trucioli, residui di lavorazione, ecc.  
 - Il particolare deve essere esente da bave e screpolature  
 - Pressione di collaudo: 4.5 bar  
 - Le flange, i tronchetti e i manicotti devono essere saldati elettricamente  
 - Tolleranze sulle lunghezze dei tronchetti e manicotti: +2 / -0  
 - Finitura: zincata



DETTAGLIO G  
1:1

REVISION	MODIFICATION	ENGINEER	REFERS TO	DATE																																																
<b>BAXI S.p.A.</b>		ENGINEER: <b>Ceccato</b>	ITEM NUMBER: <b>7104681.01</b>	REVISION: <b>1 of 1</b>																																																
© 2009		DATE: <b>05-Oct-10</b>																																																		
TITILE: <b>COLLET. 1 CALDAIA 50-60-70</b>		MATERIAL SPECIFICATION:																																																		
UNITS/SCALE: mm 1:2		QUALITY SIGNIFICANCE: [C]-CRITICAL [I]-IMPORTANT																																																		
FIRST ANGLE PROJECTION		TOLERANCE TO EN 22768 - mk UNLESS OTHERWISE SPECIFIED																																																		
		<table border="1"> <tr> <td>0.001</td><td>0.002</td><td>0.005</td><td>0.01</td><td>0.02</td><td>0.05</td><td>0.1</td><td>0.2</td><td>0.5</td><td>1</td><td>2</td><td>5</td><td>10</td><td>20</td><td>50</td><td>100</td> </tr> <tr> <td>0.001</td><td>0.002</td><td>0.005</td><td>0.01</td><td>0.02</td><td>0.05</td><td>0.1</td><td>0.2</td><td>0.5</td><td>1</td><td>2</td><td>5</td><td>10</td><td>20</td><td>50</td><td>100</td> </tr> <tr> <td>0.001</td><td>0.002</td><td>0.005</td><td>0.01</td><td>0.02</td><td>0.05</td><td>0.1</td><td>0.2</td><td>0.5</td><td>1</td><td>2</td><td>5</td><td>10</td><td>20</td><td>50</td><td>100</td> </tr> </table>			0.001	0.002	0.005	0.01	0.02	0.05	0.1	0.2	0.5	1	2	5	10	20	50	100	0.001	0.002	0.005	0.01	0.02	0.05	0.1	0.2	0.5	1	2	5	10	20	50	100	0.001	0.002	0.005	0.01	0.02	0.05	0.1	0.2	0.5	1	2	5	10	20	50	100
0.001	0.002	0.005	0.01	0.02	0.05	0.1	0.2	0.5	1	2	5	10	20	50	100																																					
0.001	0.002	0.005	0.01	0.02	0.05	0.1	0.2	0.5	1	2	5	10	20	50	100																																					
0.001	0.002	0.005	0.01	0.02	0.05	0.1	0.2	0.5	1	2	5	10	20	50	100																																					
		ITEM CATEGORY (1, 2 OR 3) <b>[3] A1</b>																																																		