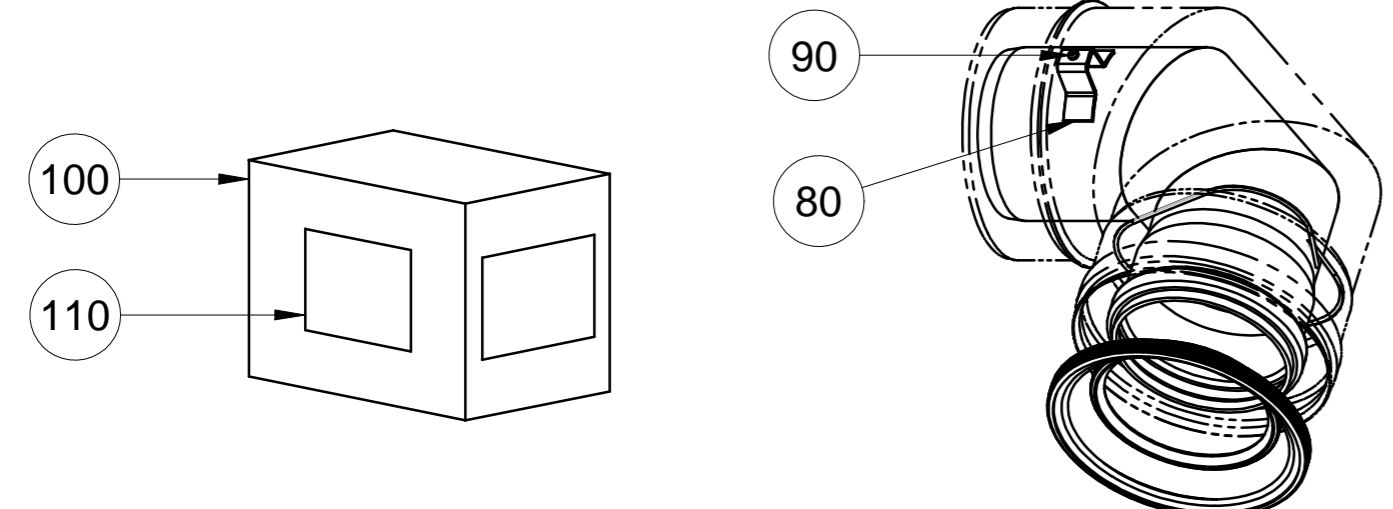


CODICE DISEGNO FORNITORE : 63232854
 CODICE ARTICOLO FORNITORE: 939584010

110	926.708.1	ETICHETTA IDENTIFICAZIONE KIT KUG714133610	2
100	XXXXXX	SCATOLA IMBALLO KIT 265x275x180	1
90	XXXXXX	VITE AUTOFILETTANTE 3,5X13 TC Cr ACCIAIO INOX C1 50	2
80	XXXXXX	STAFFETTA IN PP PER CENTRAGGIO INT/EST Ø 110/160	2
70	XXXXXX	MOLLA A FILO Ø 110/160 mm	1
60	54.1262.1	GUARNIZIONE Ø 160 MM EPDM OMOLOGATO	1
50	34.0221.1	GUARNIZIONE Ø 110 MM EPDM OMOLOGATO	1
40	XXXXXX	CURVA 90° Ø 160 M-F COLORE BIANCO RAL 9003	1
30	XXXXXX	TUBO Ø 110 M-F PER CURVA 90° M-F COND.	1
20	XXXXXX	TUBO Ø 110 M-M INTERMEDIO X CURVA 90° M-F COND.	1
10	XXXXXX	TUBO Ø 110 M-M + INVITO PER CURVA 90° M-F COND.	1
ITEM NO	PART NUMBER	DESCRIPTION	QTY

CODICE PRODOTTO FINITO CONFEZIONATO BAXI: KUG714133610

ETICHETTA INDICATIVA A CURA DEL FORNITORE
 DISEGNO NON IN SCALA



DISEGNO SCATOLA E PARTICOLARE NON IN SCALA

KUG714133610

- 90° Ø 110/160 mm BEND
- BOGEN 90° Ø 110/160 mm
- COUDE A 90° Ø 110/160 mm
- CODO DE 90° Ø 110/160 mm
- CURVA DE 90° Ø 110/160 mm
- BOCHT 90° Ø 110/160 mm
- CURVA 90° Ø 110/160 mm

codice a barre tipo C39 vedi KUG71.....
 KUG714133610

926.708.1

REVISION	MODIFICATION	ENGINEER	REFERS TO	DATE																																			
BAXI S.p.A.		Production		570467 .01																																			
A MEMBER OF BAXI GROUP		ENGINEER. DALLA COSTA MAURO		DATE. 09-Dec-09																																			
© 2009		TITLE. CURVA 90 GR. D.110-160 M-F																																					
UNITS SCALE. mm 1:1		MATERIAL SPECIFICATION.																																					
FIRST ANGLE PROJECTION.		TOLERANCE TO EN 22768 - mK UNLESS OTHERWISE SPECIFIED		QUALITY SIGNIFICANCE. [C]=CRITICAL [I]=IMPORTANT																																			
		<table border="1" style="font-size: small;"> <tr> <th>CLASS m</th> <th>0.5-3</th> <th>3-6</th> <th>6-30</th> <th>30-100</th> <th>100-400</th> <th>400-1500</th> </tr> <tr> <td>LINEAR</td> <td>±0.1</td> <td>±0.1</td> <td>±0.2</td> <td>±0.3</td> <td>±0.5</td> <td>±0.8</td> </tr> <tr> <td>RADI & CHAMFERS</td> <td>±0.4</td> <td>±1</td> <td colspan="4">±1</td> </tr> <tr> <th>CLASS m</th> <th>0-10</th> <th>10-30</th> <th>30-100</th> <th>100-400</th> <th>400+</th> <td></td> </tr> <tr> <td>ANGULAR</td> <td>±1'</td> <td>±1' 30"</td> <td>±1' 30"</td> <td>±1' 10"</td> <td>±1' 5"</td> <td></td> </tr> </table>		CLASS m	0.5-3	3-6	6-30	30-100	100-400	400-1500	LINEAR	±0.1	±0.1	±0.2	±0.3	±0.5	±0.8	RADI & CHAMFERS	±0.4	±1	±1				CLASS m	0-10	10-30	30-100	100-400	400+		ANGULAR	±1'	±1' 30"	±1' 30"	±1' 10"	±1' 5"		ITEM CATEGORY (1, 2 OR 3)
CLASS m	0.5-3	3-6	6-30	30-100	100-400	400-1500																																	
LINEAR	±0.1	±0.1	±0.2	±0.3	±0.5	±0.8																																	
RADI & CHAMFERS	±0.4	±1	±1																																				
CLASS m	0-10	10-30	30-100	100-400	400+																																		
ANGULAR	±1'	±1' 30"	±1' 30"	±1' 10"	±1' 5"																																		
		[3]		A2																																			